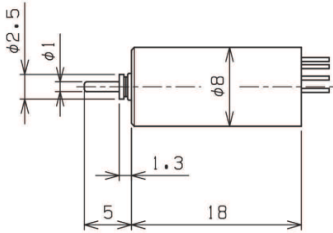
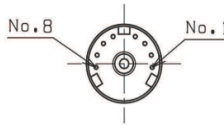
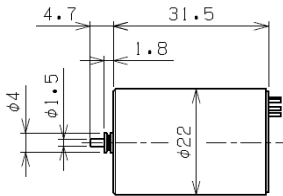


φ8mm, φ22mm Brushless Motor Slotless type

With sensors

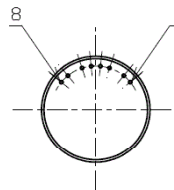


C22D-XX-S-EX



Motor NUR für Projekte.

No.	接続
1	V
2	Hw
3	Vcc
4	U
5	Hv
6	GND
7	W
8	Hu



No.	Connection
1	COIL U
2	HALL W
3	HALL Vcc
4	COIL V
5	HALL V
6	HALL GND
7	COIL W
8	HALL U

Model	X8B-01	C22D-XX				
Size(mm)	8 x 18	22 x 31.5				
Voltage(V)	4.0	14.0				
No Load Speed(rpm)	30,900	12,400				
No load Current(mA)	140	103				
Stall Current(mA)	780	4,023				
Terminal resistance(Ω)	5.13	3.5				
Stall Torque(mNm)	0.65	41.2				
Max. Efficiency(%)	33.2	70.6				
Max. Power(W)	0.53	13.4				
Rotor Inertia(g.cm ²)	0.018	2.6				
Mech Time Constant(m·sec)	9.0	8.2				

Antriebstechnik GmbH
 Starkenburgstr. 6 * 64546 Mörfelden
 Tel.:06105 24044 * Fax:06105 25593
 info@color-technik.net
www.color-technik.net