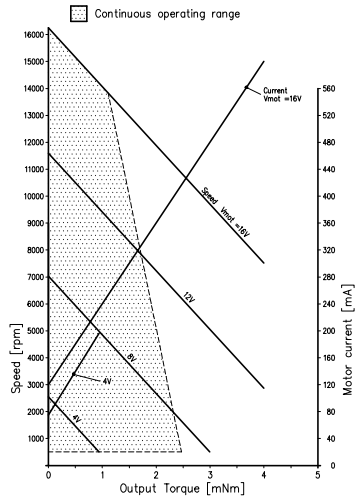


PERFORMANCE CURVE:



MOTOR DATA:

@ Tambient = 22° C		Units
Motor resistance phase to phase	9.0±10%	Ohm
Motor inductance phase to phase at 1000 Hz in assy	0.9±20%	mH
Torque constant	7.9±12%	mNm/A
EMF phase to phase at 3000 rpm	1.80±12%	Vrms
Winding temperature, max.	90	°C
Rotor moment of inertia	0.5x10 ⁻⁶	kgm ²
Mass of rotor assy	6.5	gr
Mass of stator assy	6.5	gr

CONNECTOR MATING PART NUMBERS:

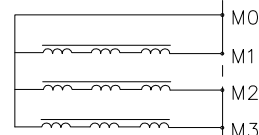
AMP MICROMATCH p/n 7-215079-4 (top entry)
 p/n 7-215460-4 (side-entry)
 p/n 7-100400-4 (side-entry, polarization)

CONNECTOR PIN ASSIGNMENTS:

Pin	Function
1	M0 (center tap)
2	M1 (phase A)
3	M3 (phase C)
4	M2 (phase B)

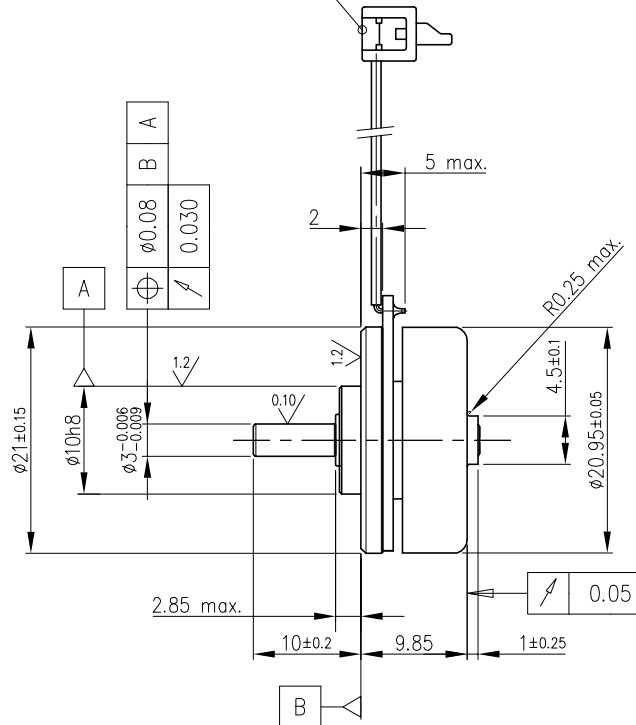
Function**	
C.C.W. rotation.*	C.W. rotation.*
Mot 0	Mot 0
Mot 1	Mot 2
Mot 3	Mot 3
Mot 2	Mot 1

* Direction of rotation as seen from "shaft-side" of motor.
 ** Reference to Philips TDA5140 motordriver specification.

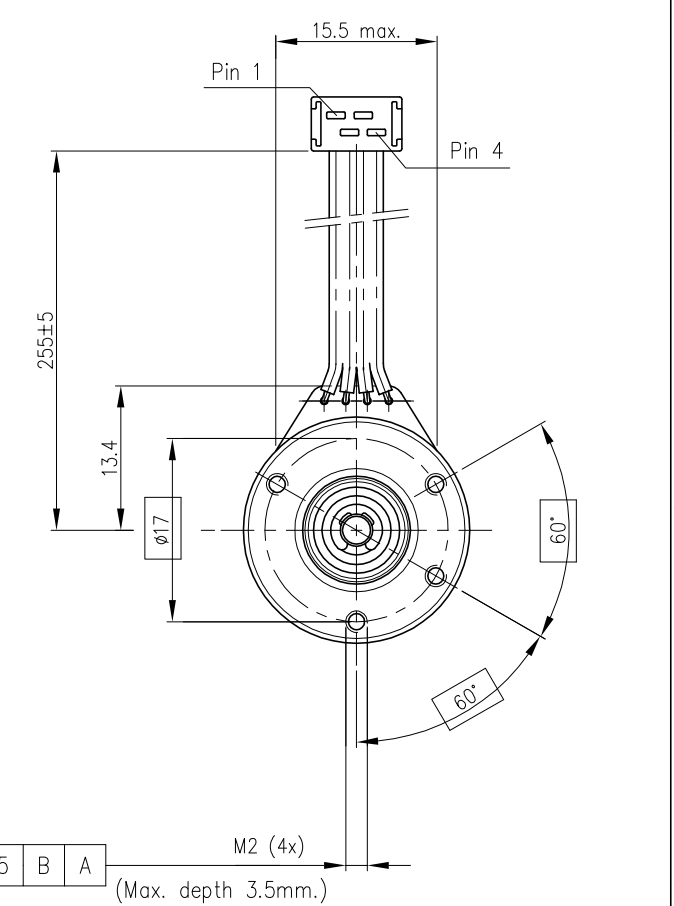


color-technik
Antriebstechnik GmbH
 Starkenburgstr. 6 * 64546 Mörfelden
 Tel.:06105 24044 * Fax:06105 25593
 info@color-technik.net
www.color-technik.net

Connector AMP MICROMATCH
 p/n 7-215083-4



DATE	REVISION/CHANGES
96-06-19	Added AMP-connector, some minor changes.
96-10-09	Consolidation, documents official.
98-02-12	See CP 40603. Change ø5max->4.7±0.05. Add run-out 0.04
09-06-25	Change rotor assy (magnet glued->pressed) and stator assy. Add motor data.
11-09-25	Correct EMF. Motor does not change.
11-10-18	Change rotor dimensions. Reduce motor height. Change rotor run out.



EUROP. PROJ.	UNIT	SCALE	GENERAL ROUGHNESS	TOLERANCES UNLESS OTHERWISE STATED DIMENSION	ANGLE	UN-D 603	UN-D 28										
	mm	2:1		±0.25	±2°												
BL21 EE				4322 016 21001		<table border="1"> <tr> <td>96-10-09</td> <td>RZ</td> </tr> <tr> <td>98-02-12</td> <td>xx</td> </tr> <tr> <td>09-06-25</td> <td>JK</td> </tr> <tr> <td>11-09-25</td> <td>JK</td> </tr> <tr> <td>11-10-18</td> <td>JK</td> </tr> </table>		96-10-09	RZ	98-02-12	xx	09-06-25	JK	11-09-25	JK	11-10-18	JK
96-10-09	RZ																
98-02-12	xx																
09-06-25	JK																
11-09-25	JK																
11-10-18	JK																
SUPERS. -		SHEET. 112-1 1		PROPERTY OF PRECISION MOTOR TECHNOLOGY BV DORDRECHT - THE NETHERLANDS													
NAME. J.R.M. Zwager		DATE. 96-10-09															
FILE. 4322 016 21001 112-1		CHECK.															