

φ10mm, φ12mm Brushless Motor Slotless type

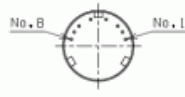
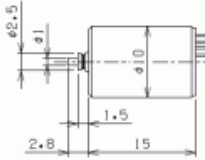


Antriebstechnik GmbH

Starkenburgerstr. 6 * 64546 Mörfelden
Tel.:06105 24044 * Fax:06105 25593

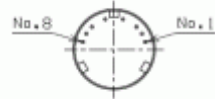
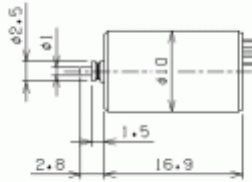
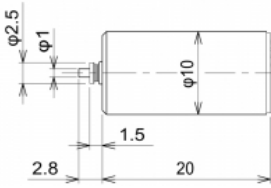
info@color-technik.net

www.color-technik.net

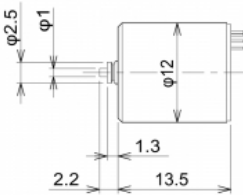


No.	接続
1	U
2	Hv
3	Vcc
4	V
5	Hv
6	GND
7	W
8	Hw

C10B-D1-8



No.	接続
1	U
2	Hv
3	Vcc
4	V
5	Hv
6	GND
7	W
8	Hu



No.	接続
1	U
2	Hv
3	Vcc
4	V
5	Hv
6	GND
7	W
8	Hu

With sensors

Model	C10B-02	C10B-01	C10C-01	C12B-01			
Size(mm)	10 x 15	10 x 16.9	10 x 20	12 x 13.5			
Voltage(V)	7.4	7.4	7.4	4.5			
No Load Speed(rpm)	26,800	29,000	26,200	22,800			
No load Current(mA)	140	170	170	125			
Stall Current(mA)	1,040	1,321	1,542	1,250			
Terminal resistance(Ω)	7.1	5.6	4.8	3.6			
Stall Torque(mNm)	2.1	2.4	3.3	1.9			
Max. Efficiency(%)	40	41.1	44.6	46.8			
Max. Power(W)	1.44	1.85	2.26	1.14			
Rotor Inertia(g.cm ²)	0.052	0.077	0.077	0.11			
Mech Time Constant(m*sec)	7.1	9.6	6.4	13.8			