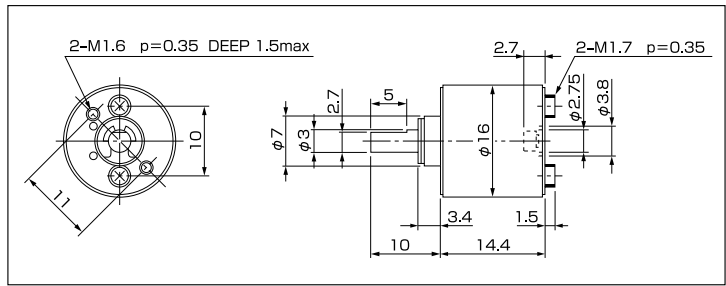


φ16 GEARHEAD series

φ16GEARHEAD Ver.1 Spur gear

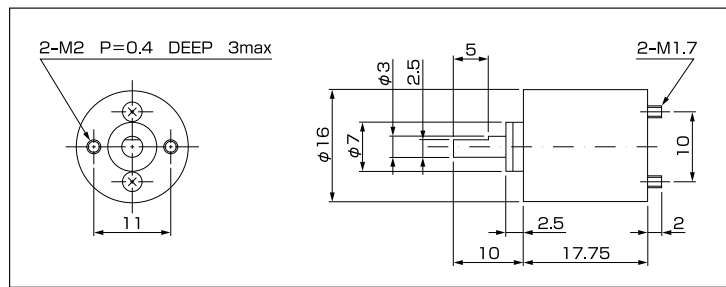


ANGEBOT ANFORDERN
Bitte hier klicken



Reduction Ratio	—	1/15	1/30	1/50	1/75	1/100	1/150
Rated Torque	mN · m	10	20	20	30	30	30
Radial Play	mm	0.05					
Thrust Play	mm	0.30					
Efficiency	%	65	65	59	59	59	59
Number of Stage	—	4	4	5	5	5	5
Direction of Rotation	—	=	=	≠	≠	≠	≠

φ16GEARHEAD Ver.2 Spur gear

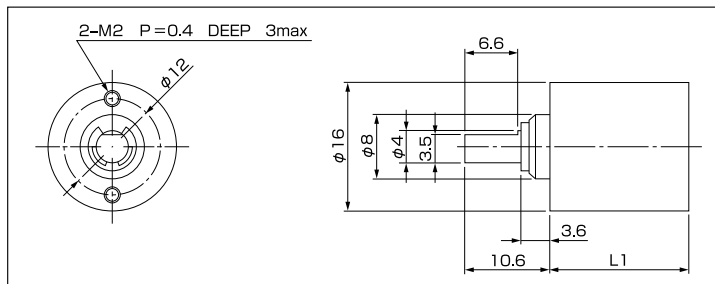


u io R o	—	1/11	1/19	1/31	1/40	1/54	1/62	1/97	1/150
Rated Torque	mN · m	12.8	29.4	34.3	49.1	58.9			
Radial Play	mm	0.07							
Thrust Play	mm	0.25							
Efficiency	%	73	66	66	59	59			
Number of Stage	—	3	4	4	5	5			
o	—			=			≠	≠	

20	1 58	1/781	1/992	1/1237	1/1413
58.9			58.9		
53			48		
6			7		
=			≠		



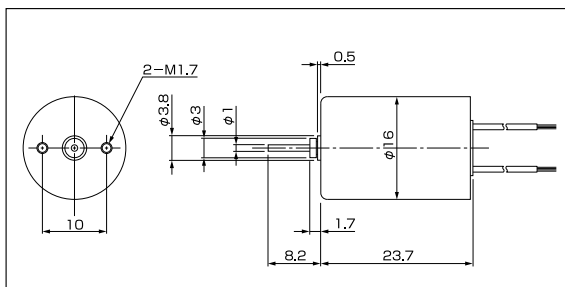
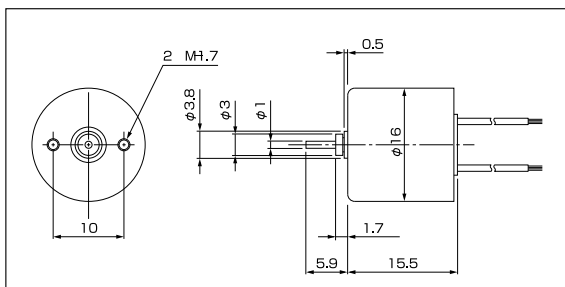
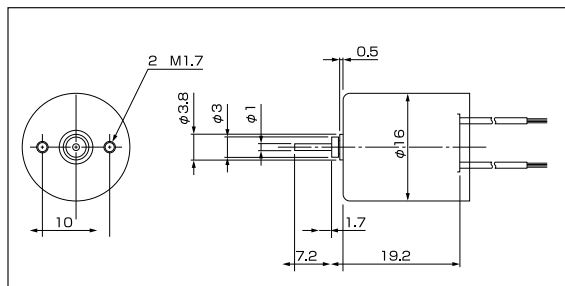
φ16GEARHEAD Ver.3 Planetary gear



Reduction Ratio	—	1/4	1/15	1/20	1/23	1/61	1/107	1/242	1/326	1/410	1/483
Rated Torque	mN · m	29.4	49			98.1		147.0		196.0	
Radial Play	mm	0.10									
Thrust Play	mm	0.35									
Efficiency	%	81	66			53		43		43	
Number of Stage	—	2	4			6		8		8	
Direction of Rotation	—	=	=			=		=		=	
L	1	—	17.3	17.3			20.5		23.7		23.7

Dimension Motors:

A16 series DC CORELESS MOTOR CIK



Nur für Projekte

color-technik

Antriebstechnik GmbH

starkenburgerstraße 6 · 64546 mörfelden

tel.: 06105 24044 fax: 06105 25593

mail: info@color-technik.net

www.color-technik.net