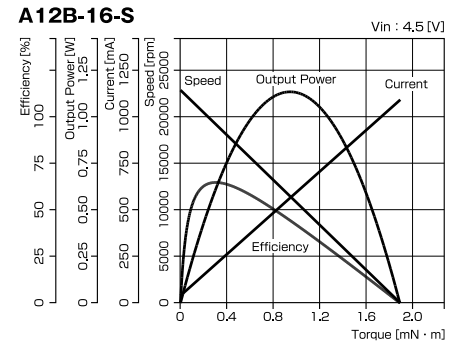
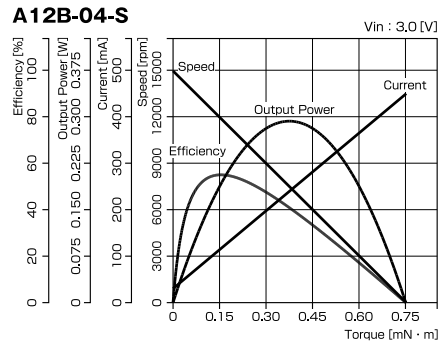
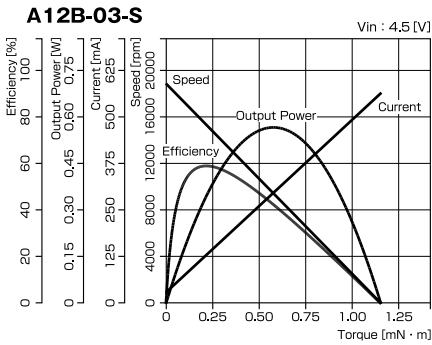


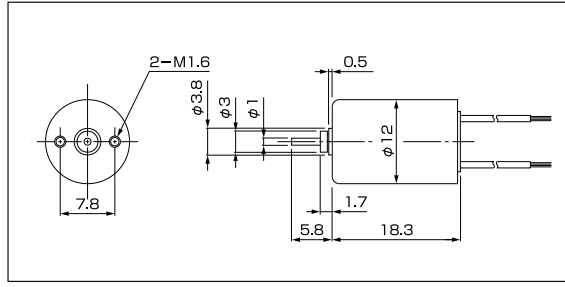
- Typical applications
- Medical equipment
- Industrial equipment
- High grade toy
- Optical equipment

	Rated Voltage	No Load Speed	No Load Current	Stall Current	Terminal Resistance	Stall Torque	Starting Voltage	Max. Efficiency	Max. Power	Rotor Inertia	Mech. Time Constant	Weight
	V	rpm	mA	mA	Ω	mN · m	V	%	W	g · cm ²	m · sec	g
A12B-03-S	4.5	18,800	30	563	8.0	1.15	0.2	59.1	0.57	0.076	13.0	8.2
A12B-04-S	3.0	14,900	30	448	6.7	0.75	0.2	54.9	0.29	0.07	14.6	8.2
A12B-16-S	4.5	23,000	40	1,098	4.1	1.90	0.2	65.5	1.15	0.095	12.0	8.2

■ Characteristic Curve



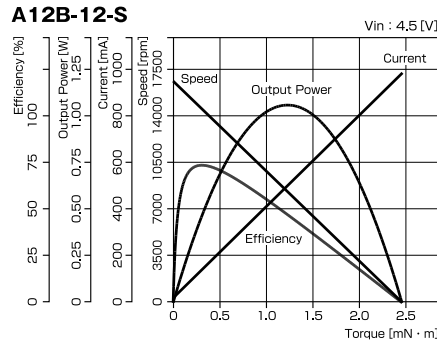
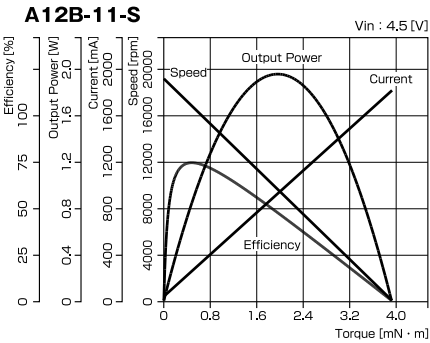
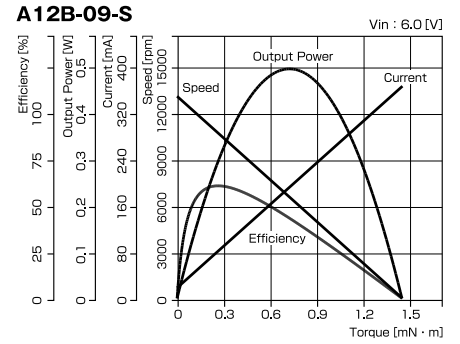
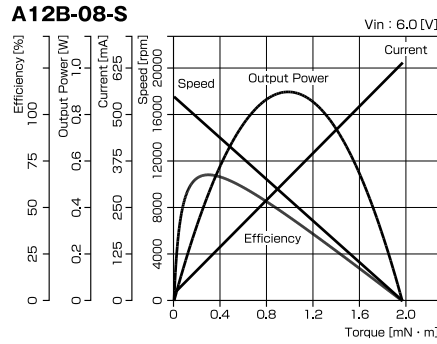
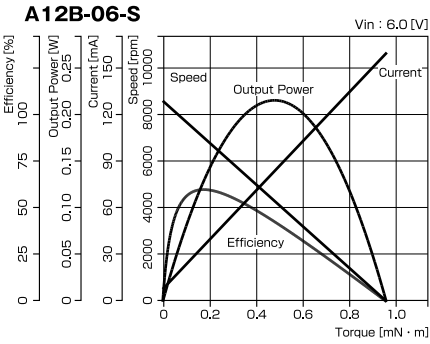
**ANGEBOT
ANFORDERN**
Bitte hier klicken

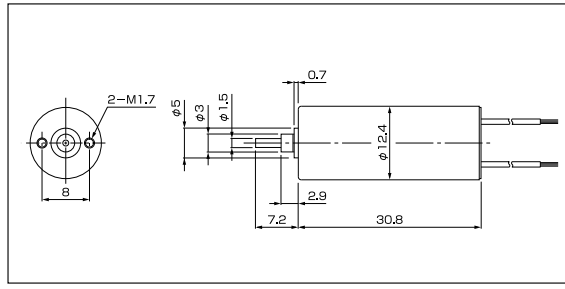


- Typical applications
- Industrial equipment
 - Radio control
 - Medical equipment
 - Electric office equipment

	Rated Voltage	No Load Speed	No Load Current	Stall Current	Terminal Resistance	Stall Torque	Starting Voltage	Max. Efficiency	Max. Power	Rotor Inertia	Mech. Time Constant	Weight
	V	rpm	mA	mA	Ω	mN · m	V	%	W	g · cm ²	m · sec	g
A12B-06-S	6.0	8,600	8	160	37.5	0.96	0.2	60.3	0.22	0.086	8.0	11
A12B-08-S	6.0	17,500	20	638	9.4	1.96	0.2	67.7	0.90	0.077	7.2	11
A12B-09-S	6.0	13,000	18	364	16.5	1.45	0.2	60.5	0.49	0.075	7.0	11
A12B-11-S	4.5	19,000	35	1,800	2.5	3.91	0.1	74.1	1.95	0.137	7.0	11
A12B-12-S	4.5	16,500	20	978	4.6	2.44	0.2	73.4	1.06	0.09	6.4	11

■ Characteristic Curve





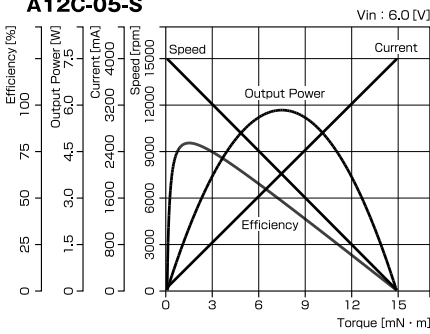
Typical applications

- Camera
- Radio control
- Medical equipment
- Industrial equipment

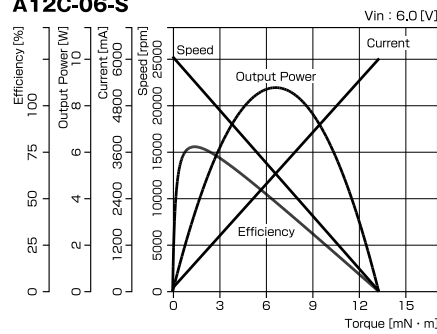
	Rated Voltage	No Load Speed	No Load Current	Stall Current	Terminal Resistance	Stall Torque	Starting Voltage	Max. Efficiency	Max. Power	Rotor Inertia	Mech. Time Constant	Weight
	V	rpm	mA	mA	Ω	mN · m	V	%	W	g · cm ²	m · sec	g
A12C-05-S	6.0	15,000	45	4,000	1.5	14.9	0.1	79.9	5.9	0.48	5.0	19
A12C-06-S	6.0	25,200	85	6,000	1.0	13.3	0.1	77.6	8.8	0.40	8.0	17
A12C-07-S	6.0	20,400	65	6,000	1.0	16.5	0.1	80.3	8.8	0.40	5.2	19
A12C-09-S	6.0	19,700	50	3,750	1.6	10.6	0.1	78.2	5.5	0.32	6.2	17

Characteristic Curve

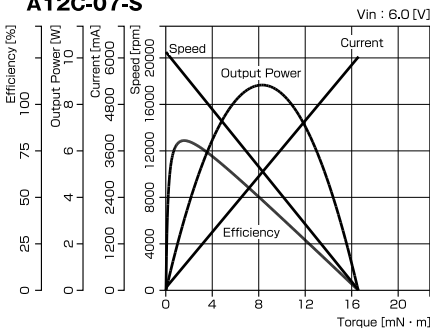
A12C-05-S



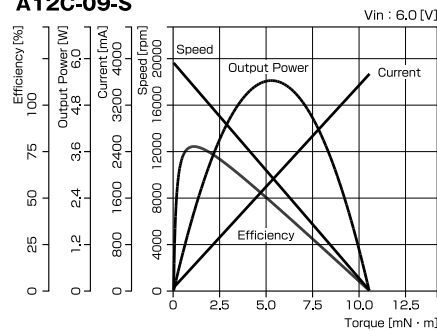
A12C-06-S



A12C-07-S



A12C-09-S



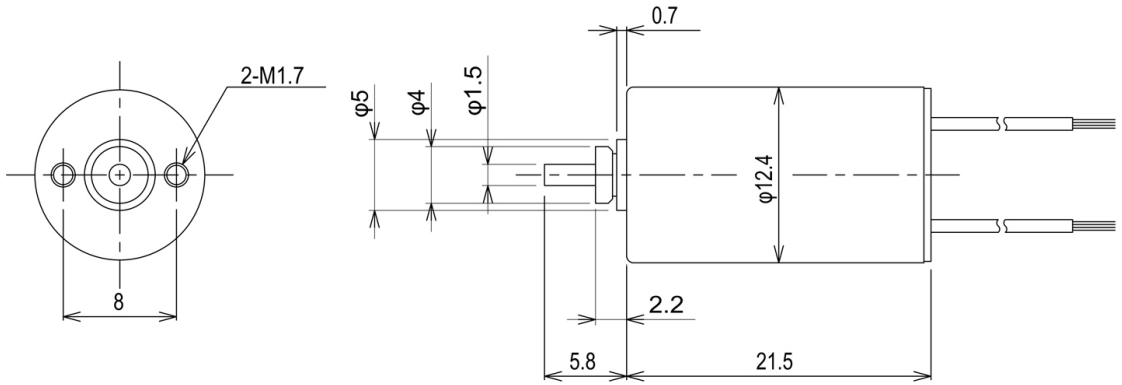
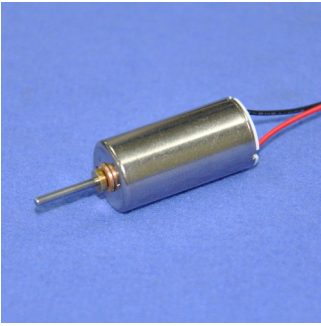
Antriebstechnik GmbH

Starkenburgerstr. 6 * 64546 Mörfelden

Tel.: 06105 24044 * Fax: 06105 25593

info@color-technik.net

www.color-technik.net



Typical applications

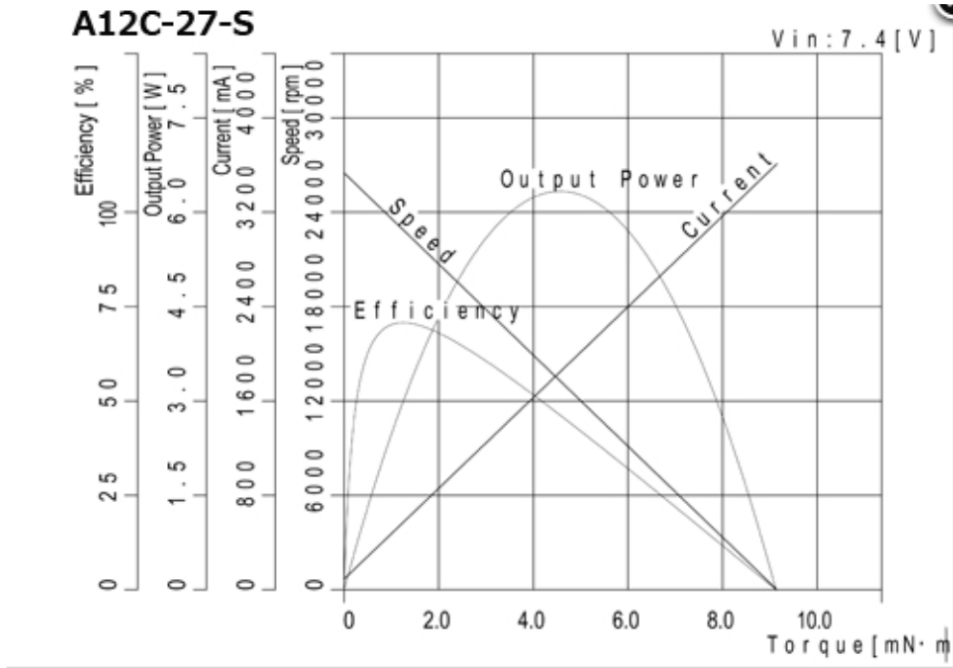
- Industrial equipment
- Radio control
- Medical equipment
- Office equipment

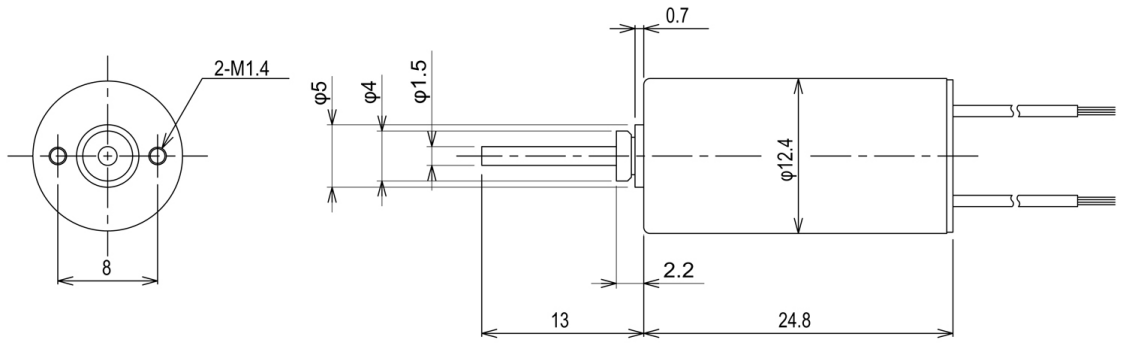
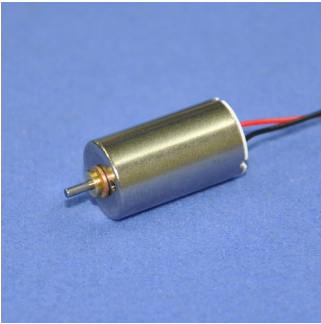


Specifications

Models Number	Rated Voltage	No Load Speed	No Load Current	Stall Current	Terminal Resistance	Stall Torque	Starting Voltage	Max. Efficiency	Max. Power	Rotor Inertia	Mech. Time Constant	Weight
	V	rpm	mA	mA	Ω	mN·m	V	%	W	g·cm ²	m·sec	g
A12C-27-S	7.4	26,500	90	3,610	2.05	9.15	0.1	70.9	6.35	0.18	5.4	12

Characteristic curve





- Typical applications
- Industrial equipment
 - Radio control
 - Medical equipment
 - Office equipment



■ Specifications

Models Number	Rated Voltage	No Load Speed	No Load Current	Stall Current	Terminal Resistance	Stall Torque	Starting Voltage	Max. Efficiency	Max. Power	Rotor Inertia	Mech. Time Constant	Weight
	V	rpm	mA	mA	Ω	mN·m	V	%	W	g·cm ²	m·sec	g
A12C-31-S	11.1	24,800	35	4,620	2.40	19.4	0.1	83.3	12.6	0.28	3.7	15

■ Characteristic curve

